

Dear friends,

Among the things we are really grateful to God for in this frigid week (It is a mere 4 degrees as I write this and it's going to get even colder.) are a properly working furnace that keeps our pipes (and us!) from freezing, our gas fireplace where we can warm our toes when we're reading, and the heaters in our cars that allow us to get around town in relative comfort.



But we are also pleased to say our *hearts* are also being warmed even in these freezing days by two exciting developments. Number 1 -- "When Swing Was King" is on the way back! That's right, we have presented live shows of the "When Swing Was King" you all love at 3 senior living facilities just this week with another one next week. It is a far cry from the 12 programs a

month we were doing before the quarantines, but it's a very hopeful start.

And then here's the second piece of news that we hope is heartwarming to some of you. We were asked by one of the activity directors to organize a weekly Bible study/worship service for the assisted living facility where she so lovingly serves. And though, as you know, our schedule is already packed full, we have decided to take on the challenge. Now, the service we envision will be rather brief and informal, with some Bible reading and comments on that day's text, Christian music, and a few special twists tossed in occasionally – a poem, testimony, story, activity by kids. And there will be coffee and refreshments too.



But this Bible study/church service is not for one facility alone. For even though we will be conducting it live, we will also be recording it so that others might enjoy it too. That could mean watching it via YouTube or a DVD in your own rooms or perhaps as part of a group activity. Therefore, we hope you see us soon...one way or another!

*Denny & Claire*

## Multiple Choice Questions

1) It's the Windy City, the Second City, and "that toddlin' town." It is:

- A) Boston
- B) Philadelphia
- C) Chicago
- D) Miami

2) The song "Edelweiss" comes from what Broadway play and movie?

- A) *The Sound of Music*
- B) *The King and I*
- C) *The Prisoner of Zenda*
- D) *My Fair Lady*

3) Regarding Question #2 above, Mary Martin introduced "Edelweiss" in the play but who sang it in the Hollywood film?

- A) Mary Martin
- B) Ann Blythe
- C) Audrey Hepburn
- D) Julie Andrews

4) True or False -- Mount Kilimanjaro is the highest mountain in the world.

---

5) Which of the following was **NOT** associated with Robin Hood?

- A) Sherwood Forest
- B) Knights of the Round Table
- C) Maid Marian
- D) Archery

6) The most successful (a million seller) version of "I'll Never Smile Again" was recorded in 1940 by...

- A) Harry James & Helen O'Connell
- B) Chick Webb & Ella Fitzgerald
- C) Tommy Dorsey & Frank Sinatra
- D) Artie Shaw & Helen Forrest

7) The Hebrew midwives disobeyed Pharaoh's orders in order to save...

- A) The Passover lamb
- B) Baby Moses
- C) The 10 Commandments
- D) Joseph and his brothers

8) True or False -- Apples are actually a member of the rose family of plants. \_\_\_\_\_

9) A chess game is won when a player does this to his opponent...

- A) Checkmates his king
- B) Removes all pieces from the board
- C) Scores 13 points
- D) Moves 4 pieces to the final rank

10) Fred Astaire and Petula Clark starred in the Hollywood version of this Broadway musical...

- A) *Brigadoon*
- B) *Cabaret*
- C) *Cinderella*
- D) *Finian's Rainbow*

11) The Margaret Mitchell House (Mitchell was the author of the novel, *Gone With The Wind*) is located in this city:

- A) Atlanta, Georgia
- B) Savannah, Georgia
- C) Biloxi, Mississippi
- D) Macon, Georgia



12) The photo above is of Chimney Rock. In what state is this landmark?

- A) Wyoming
- B) Nebraska
- C) Utah
- D) Montana

13) In 1956 Edie Adams won a Tony Award for her portrayal of Daisy Mae in what Broadway musical?

- A) *On the Town*
- B) *Some Like It Hot*
- C) *My Pal Joey*
- D) *Li'l Abner*

14) In football, how many points does a team earn for a field goal?

- A) 1
- B) 2
- C) 3
- D) 4

15) The first 10 amendments to the U.S. Constitution are known as...

- A) Bill of Rights
- B) Federalist Papers
- C) Articles of Confederation
- D) Marshall Plan

16) True or False -- The Charles Dickens novel that begins, "It was the best of times, it was the worst of times" is *David Copperfield*. \_\_\_\_\_

17) The "A Train" made famous by the Duke Ellington song was about a train that ran from...

- A) Atchison to Topeka
- B) Eastern Brooklyn into Harlem and northern Manhattan
- C) Boston to Philadelphia
- D) Denver along the Rio Grande to Los Angeles

18) True or False -- The Hungarian word for pepper is *paprika*. \_\_\_\_\_

19) Cinderella's Fairy Godmother made a carriage for her to ride to the ball from what object?

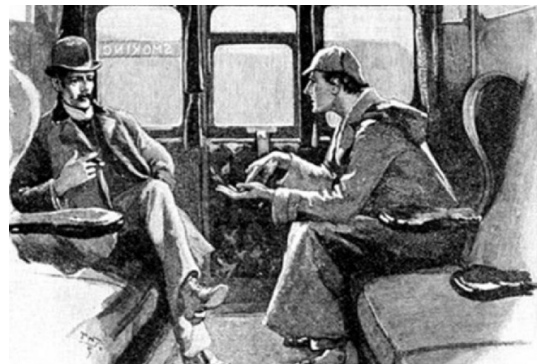
- A) A washtub
- B) A broken-down wagon
- C) Her stepmother's bureau drawer
- D) A pumpkin

20) The Casa Loma Orchestra's popular leader was:

- A) Guy Lombardo
- B) Eddie Howard
- C) Glen Gray
- D) Ozzie Nelson

21) Who are the two literary characters depicted in the drawing below?

- A) Dr. Watson & Sherlock Holmes
- B) Dr. Boswell & Samuel Johnson
- C) Capt. Hastings & Hercule Poirot
- D) Dr. Jekyll & Mr. Hyde



22) The musical *Fiddler on the Roof* was set in what country?

- A) Lithuania
- B) Hungary
- C) Russia
- D) Poland

23) True or False -- There are more restaurants in the *Subway* chain worldwide than *McDonald's* and *Wendy's* combined. \_\_\_\_\_

24) What singer recorded "Mambo Italiano" in 1955 and took it into the Top Ten?

- A) Dean Martin
- B) Jerry Vale
- C) Anthony Newley
- D) Rosemary Clooney

25) The closely guarded formula for making Coca-Cola is an example of what type of information?

- A) Trademark
- B) Trade Secret
- C) Patent pending
- D) Copyright

26) Elvis Presley's favorite sandwich?

- A) Patty melt on white rye
- B) Egg salad and cucumber
- C) Peanut butter and banana
- D) Chicken salad and crushed potato chips

27) True or False -- The very first *Kentucky Fried Chicken* restaurant was in Bowling Green, Kentucky.  
\_\_\_\_\_

28) In 1954 The Chordettes sang about a character who puts people to sleep but with a guarantee of good dreams. That song was called...

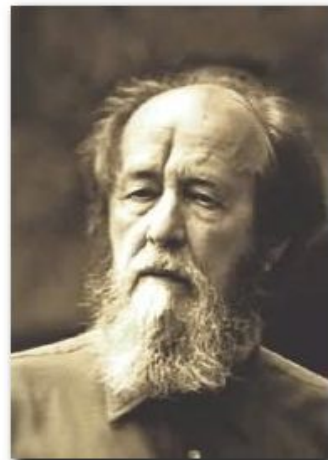
- A) *Cupid*
- B) *Beau Brummel*
- C) *Glow Worm*
- D) *Mr. Sandman*

29) Notre Dame has its Fighting Irish. Penn State has its Nittany Lions. And the University of Oregon has its...

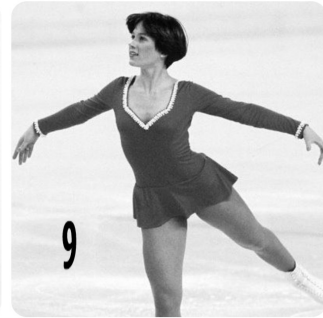
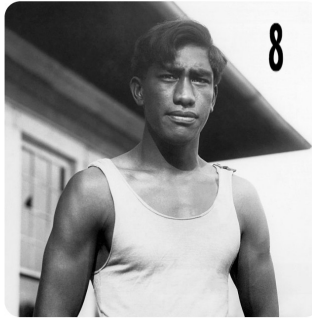
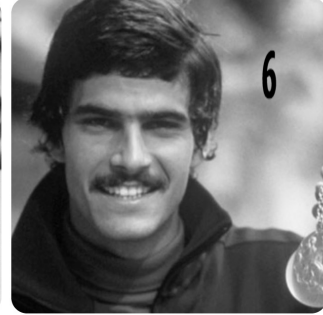
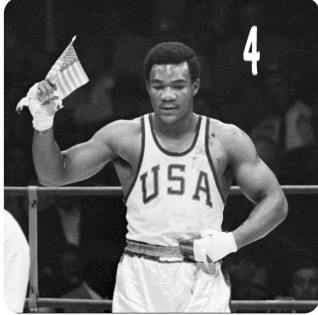
- A) Wildcats
- B) Ducks
- C) Cardinals
- D) Boilermakers

30) Do you know the name of the celebrated writer shown below?

- A) Alexander Solzhenitsyn
- B) Victor Hugo
- C) G.K. Chesterton
- D) Aldous Huxley



## Can You Identify These Famous Olympic Athletes?



\* Mark Spitz

\* Dorothy Hamill

\* Jesse Owens

\* George Foreman

\* Duke Kahanamoku

\* Peggy Fleming

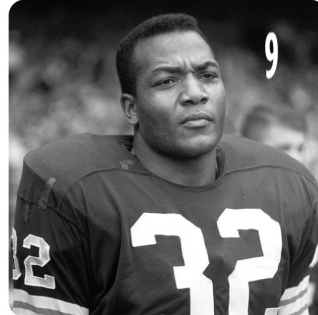
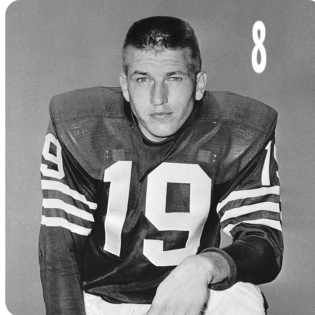
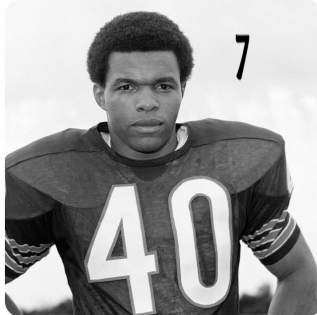
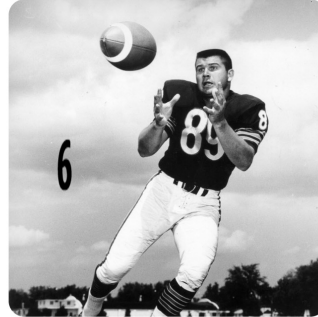
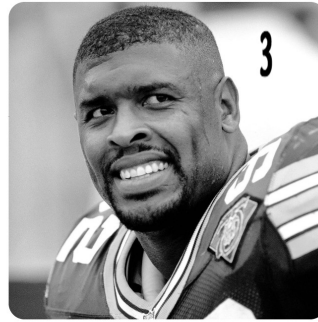
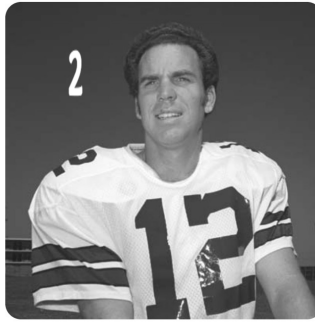
\* Johnny Weissmuller

\* Sonja Henie

\* Jim Thorpe

10) Bonus question: Which 2 of these athletes became popular movie stars?

## Can You Identify These Pro Football Legends?



\* Dick Butkus

\* Roger Staubach

\* Gale Sayers

\* Jim Brown

\* Mike Ditka

\* John Elway

\* Johnny Unitas

\* Walter Payton

\* Reggie White

10) Bonus question: Which of these athletes also coached a NFL championship team?

## Points to Ponder...

“We must reject the idea that every time a law is broken, society is guilty rather than the lawbreaker. It is time to restore the American precept that each individual is accountable for his actions.” (Ronald Reagan)

“I merely took the energy it takes to pout and instead I wrote some blues.”  
(Duke Ellington)

“Rejoice in hope, be patient in tribulation, be constant in prayer.”  
(Romans 12:12)

“A good friend is like a four-leaf clover -- hard to find and lucky to have.”  
(Irish Proverb)

“The more I practice, the luckier I get.” (Arnold Palmer)

“God will meet you where you are in order  
to take you where He wants you to go.” (Tony Evans)

“Agriculture is the most healthful, most useful,  
and most noble employment of man.” (George Washington)

“All I wanted was just what everybody else wants, you know, to be loved.”  
(Rita Hayworth)

“Unfortunately, many people do not consider fun an important item  
on their daily agenda. For me, that was always a high priority  
in whatever I was doing.” (Chuck Yeager)

“Simplicity is the ultimate sophistication.” (Leonardo da Vinci)

“And God blessed them. And God said to them, ‘Be fruitful and multiply  
and fill the earth and subdue it, and have dominion over the fish  
of the sea and over the birds of the heavens and  
over every living thing that moves on the earth.’” (Genesis 1:28)

## What Comes Next in this Song Lyric?

- 1) “And if I ever lost you, how much would I cry...
- 2) “We may never, never meet again on that bumpy road to love. Still I’ll always, always keep the memory of the way you hold your knife; the way we danced ‘til three; the way you changed my life...
- 3) “Some day I’ll wish upon a star and wake up where the clouds are far behind me...
- 4) “A wonderful savior is Jesus my Lord, a wonderful Savior to me. He hideth my soul in the cleft of the rock where rivers of pleasure I see. He hideth my soul in the cleft of the rock that shadows a dry, thirsty land...
- 5) “It’s a Barnum and Bailey world, just as phony as it can be...
- 6) “A cigarette that bears a lipstick’s traces. An airline ticket to romantic places...
- 7) “I get no kick from champagne. Mere alcohol doesn’t thrill me at all...
- 8) “Swing low, sweet chariot coming for to carry me home. Swing low, sweet chariot coming for to carry me home. If you get there before I do, (Coming for to carry me home)...
- 9) “Oh, won’t you tell me when we will meet again? Sunday, Monday, or always...
- 10) “Your cheatin’ heart will make you weep. You’ll cry and cry and try to sleep...



## **The Answers!**

### **Multiple Choice**

- 1) C
- 2) A
- 3) D
- 4) False: It's Mt. Everest.
- 5) B
- 6) C
- 7) B
- 8) True
- 9) A
- 10) D

- 11) A
- 12) B
- 13) D
- 14) C
- 15) A
- 16) False: It is *Tale of Two Cities*
- 17) B
- 18) True
- 19) D
- 20) C

- 21) A
- 22) C
- 23) True: 44,847 Subways vs 36,000 McDonald's and 6,503 Wendy's.
- 24) D
- 25) B
- 26) C
- 27) False: Salt Lake City, Utah
- 28) D
- 29) B
- 30) A

### **Can You Identify These Olympic Athletes?**

- 1) Jim Thorpe
- 2) Sonja Henie
- 3) Jesse Owens
- 4) George Foreman
- 5) Johnny Weissmuller
- 6) Mark Spitz
- 7) Peggy Fleming
- 8) Duke Kahanamoku
- 9) Dorothy Hamill
- 10) 2 and 5

### **Can You Identify These Pro Football Legends?**

- 1) Walter Payton
- 2) Roger Staubach
- 3) Reggie White
- 4) Dick Butkus
- 5) John Elway
- 6) Mike Ditka
- 7) Gale Sayers
- 8) Johnny Unitas
- 9) Jim Brown
- 10) 6

### **What Comes Next in this Song Lyric?**

- 1) "...How deep is the ocean? How high is the sky?"
- 2) "...No, no they can't take that away from me. No, they can't take that away from me."

3) "...Where troubles melt like lemon drops away above the chimney tops, that's where you'll find me."

4) "...He hideth my life in the depths of His love and covers me there with His hand, and covers me there with His hand."

5) "...But it wouldn't be make believe if you believed in me."

6) "...And still my heart has wings. These foolish things remind me of you."

7) "...So, tell me why should it be true that I get a kick out of you?"

8) "...Tell all my friends I'm coming too. (Coming for to carry me home.)"

9) "...If you're satisfied, I'll be at your side Sunday, Monday, or always."

10) "...But sleep won't come the whole night through. Your cheatin' heart will tell on you."